

# COMUNE DI S. GIORGIO A LIRI PROVINCIA DI FROSINONE

UBICAZIONE :

COMUNE DI S. GIORGIO A LIRI

OGGETTO :

PIANO DI ZONIZZAZIONE  
ACUSTICA

LEGGE REGIONALE N.18 DEL 3 AGOSTO 2001

IL COMMITTENTE:

COMUNE DI S. GIORGIO A LIRI

GRUPPO DI PROGETTAZIONE:

ARCH. FRANCESCO BIANCHI IN QUALITÀ DI TECNICO COMPETENTE AI  
SENSI DELL'ART. 2, COMMI 6,7 DELLA LEGGE 26/10/95 N. 447, ISCRITTO AL N° 149,  
NEL PRIMO ELENCO REGIONALE, ALLEGATO AL DECRETO N. 1372/1998

ARCH. MARIA GRAZIA CIRCELLI IN QUALITÀ DI TECNICO COMPETENTE AI  
SENSI DELL'ART. 2, COMMI 6,7 DELLA LEGGE 26/10/95 N. 447, ISCRITTA ALL'ELENCO  
REGIONALE DELLA REGIONE PUGLIA CON DETERMINA N.86 DEL 13/06/2002

ARCH. GIANCARLO BIANCHI  
ARCH. CRISTINA MAGNANTE

TIMBRO

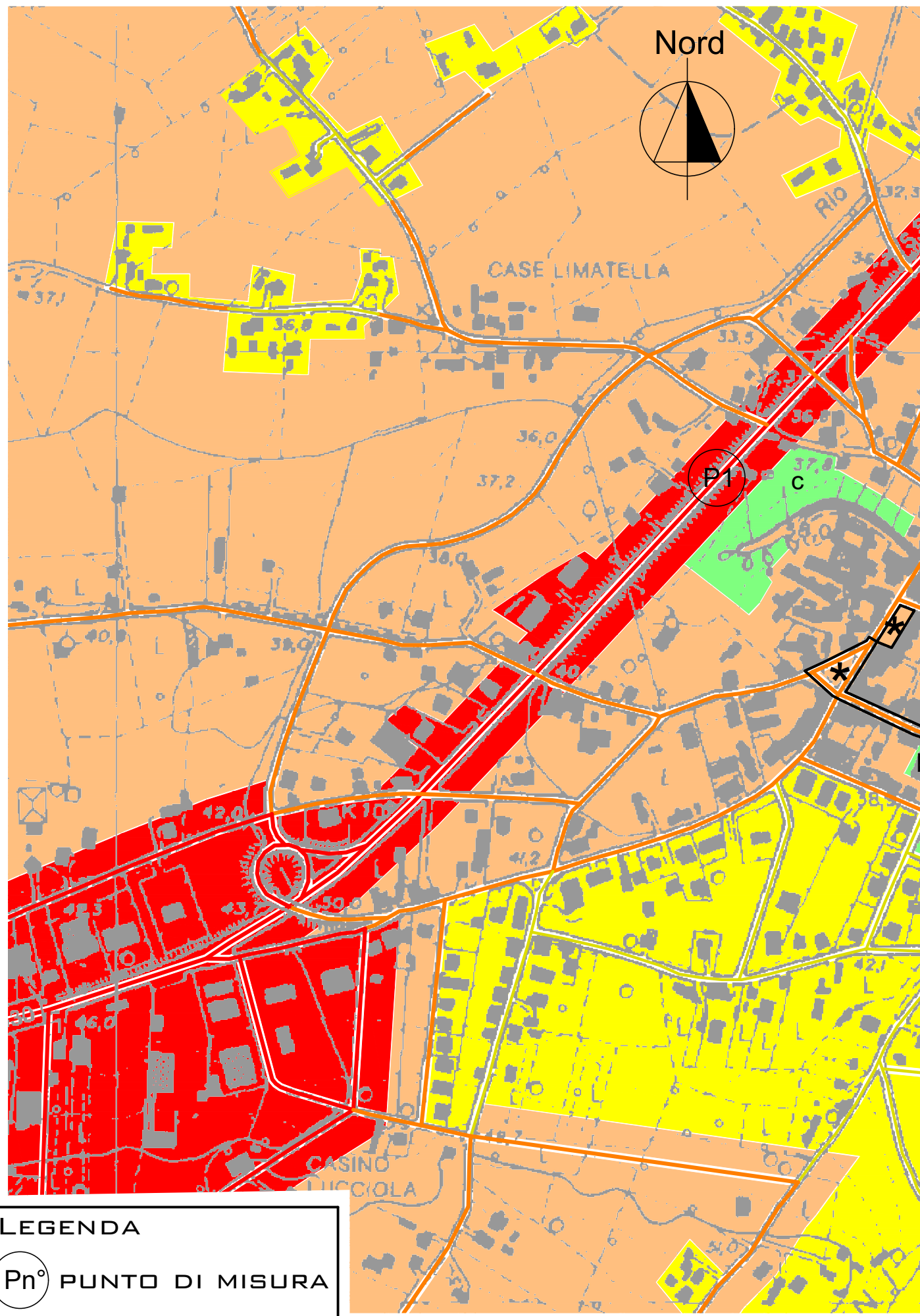
TIMBRO

TITOLO TAVOLA:

RILIEVI FONOMETRICI DI CONTROLLO

N°	DATA REV.	REVISIONE	DATA:	SCALA:
0	.....	EMISSIONE	.....	.....

TAVOLA N°  
**RF**



# RILIEVO FONOMETRICO PUNTO DI MISURA P1

MEMORY DUMP

\*\*\*\*\*

Section: **P1 - Strada Statale 630 Ausonia (zona censuaria n° 2)**  
 Program: 0 SINGLE DATA RECORD

24 GEN 03 @ 15:16:43  
 MICROPHONE GAIN= 50mV/P AMP. GAIN=20dB  
 MEMORY UNIT=512KB

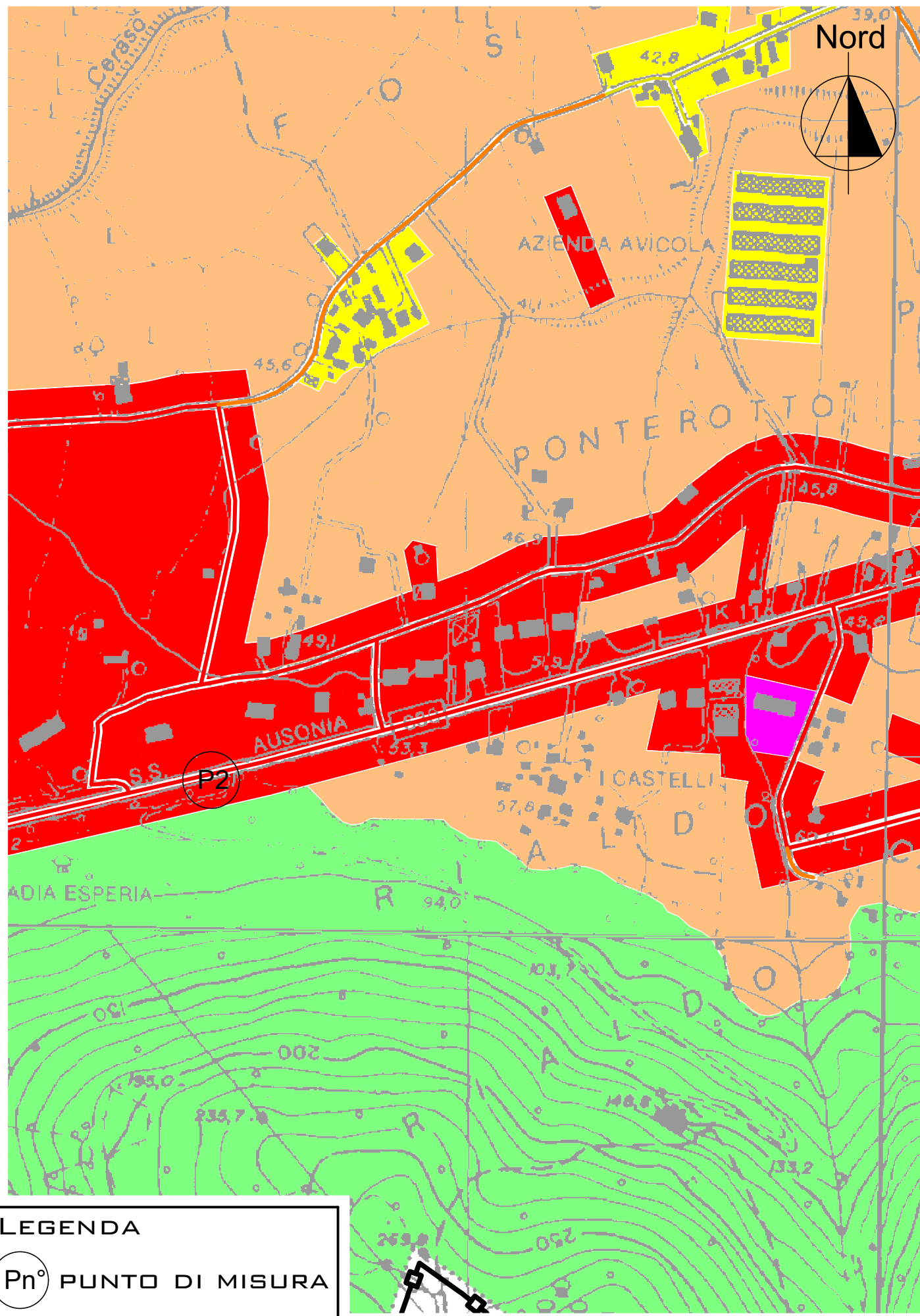
Leq 0.125s 63.2 dBA  
 SPL PEAK 99.0 dBA  
 SPL FAST 63.5 dBA  
**Leq 5m 74.0 dBA @ 5m**  
 SEL 98.8 dBA @ 5m  
 DOSE 8 hours 1.2 % A @ 5m  
 DOSE 0.0 % A @ 5m  
 SPL max FAST 88.7 dBA  
 SPL min FAST 34.3 dBA  
 Leq max 0.125s 114.0 dBA  
 Leq min 0.125s 34.4 dBA

END OF SECTION

\*\*\*\*\*

**COMMENTO:**  
 LIVELLO SONORO EQUIVALENTE AMBIENTALE  
 ESTERNO DIURNO - TRAFFICO VEICOLARE FLUIDO  
 INTENSO (64 VEICOLI LEGGERI, 12 VEICOLI  
 PESANTI) -

LEGENDA  
 Pn° PUNTO DI MISURA



# RILIEVO FONOMETRICO PUNTO DI MISURA P2

MEMORY DUMP

\*\*\*\*\*

Section: **P2 - Strada Statale 630 Ausonia (zona censuaria n° 9)**  
 Program: 0 SINGLE DATA RECORD

24 GEN 03 @ 15:22:49  
 MICROPHONE GAIN= 50mV/P AMP. GAIN=20dB  
 MEMORY UNIT=512KB

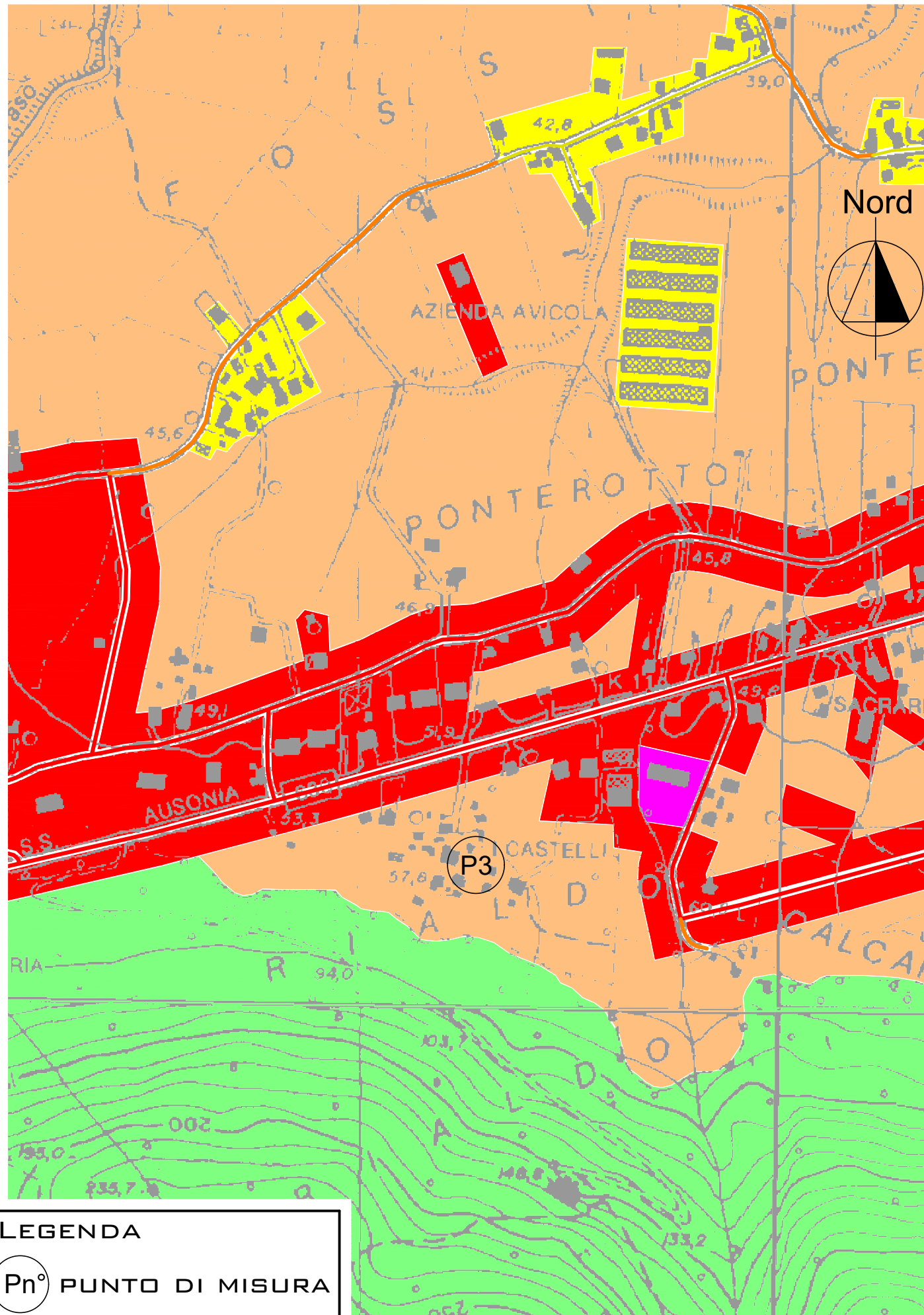
Leq 0.125s 55.4 dBA  
 SPL PEAK 99.0 dBA  
 SPL FAST 55.0 dBA  
**Leq 5m 74.8 dBA @ 5m**  
 SEL 99.6 dBA @ 5m  
 DOSE 8 hours 1.5 % A @ 5m  
 DOSE 0.0 % A @ 5m  
 SPL max FAST 88.7 dBA  
 SPL min FAST 34.3 dBA  
 Leq max 0.125s 114.0 dBA  
 Leq min 0.125s 34.4 dBA

END OF SECTION

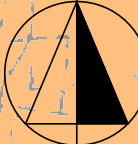
\*\*\*\*\*

**COMMENTO:**  
 LIVELLO SONORO EQUIVALENTE AMBIENTALE  
 ESTERNO DIURNO - TRAFFICO VEICOLARE FLUIDO  
 INTENSO (74 VEICOLI LEGGERI, 10 VEICOLI  
 PESANTI) -

# RILIEVO FONOMETRICO PUNTO DI MISURA P3



Nord



## LEGENDA

Pn° PUNTO DI MISURA

MEMORY DUMP

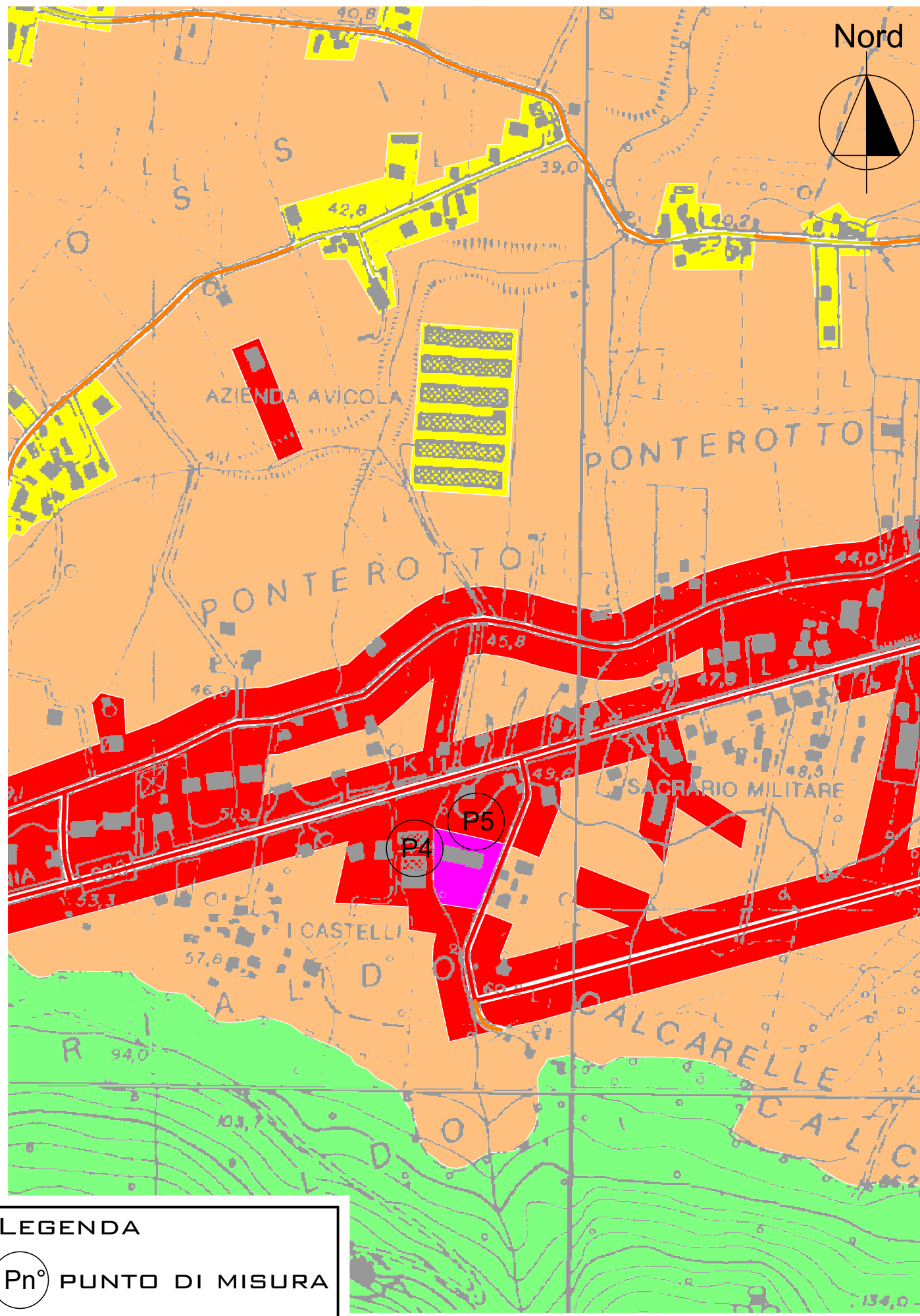
Section: P3 - fondo strada su cortile in zona censuaria n°9  
Program: 0 SINGLE DATA RECORD

05 DEC 02 @ 14:50:48  
MICROPHONE GAIN= 50mV/P AMP. GAIN=40dB  
MEMORY UNIT=512KB

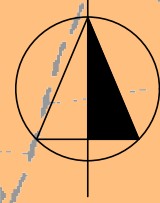
Leq 0.125s 49.7 dBA  
SPL PEAK 78.5 dBA  
SPL FAST 49.1 dBA  
**Leq 1m 49.8 dBA @ 00:00:07**  
SEL 58.4 dBA @ 00:00:07  
DOSE 8 hours 0.0 % A @ 00:00:07  
DOSE 0.0 % A @ 00:00:07  
SPL max FAST 61.5 dBA  
SPL min FAST 19.8 dBA  
Leq max 0.125s 111.4 dBA  
Leq min 0.125s 19.9 dBA

END OF SECTION

COMMENTO:  
LIVELLO SONORO EQUIVALENTE AMBIENTALE  
ESTERNO DIURNO - TRAFFICO VEICOLARE DALLA  
S.S. 630 AUSONIA, GALLINE -



Nord



LEGENDA

Pn° PUNTO DI MISURA

RILIEVO FONOMETRICO PUNTO DI MISURA P4-P5

MEMORY DUMP

\*\*\*\*\*

Section: **P4 - acciaieria a porte aperte via Ausonia, 35 (z. censuaria n° 9)**  
**fdm costruzioni in acciaio (generiche lavorazioni)**

Program: 0 SINGLE DATA RECORD

05 DEC 02 @ 14:57:54  
 MEMORY UNIT=512KB

Leq 0.125s 68.2 dBA  
 SPL PEAK 91.7 dBA  
 SPL FAST 68.3 dBA  
**Leq 1m 67.6 dBA @ 00:00:18**  
 SEL 80.4 dBA @ 00:00:18  
 DOSE 8 hours 0.1 % A @ 00:00:18  
 DOSE 0.0 % A @ 00:00:18  
 SPL max FAST 79.7 dBA  
 SPL min FAST 34.0 dBA  
 Leq max 0.125s 111.2 dBA  
 Leq min 0.125s 34.1 dBA

END OF SECTION

\*\*\*\*\*

MEMORY DUMP

\*\*\*\*\*

Section: **P5 - acciaieria a porte aperte via Ausonia, 35 (z. censuaria n° 9)**  
**fdm costruzioni in acciaio**

Program: 0 SINGLE DATA RECORD

05 DEC 02 @ 14:59:07  
 MICROPHONE GAIN= 50mV/P AMP. GAIN=20dB  
 MEMORY UNIT=512KB

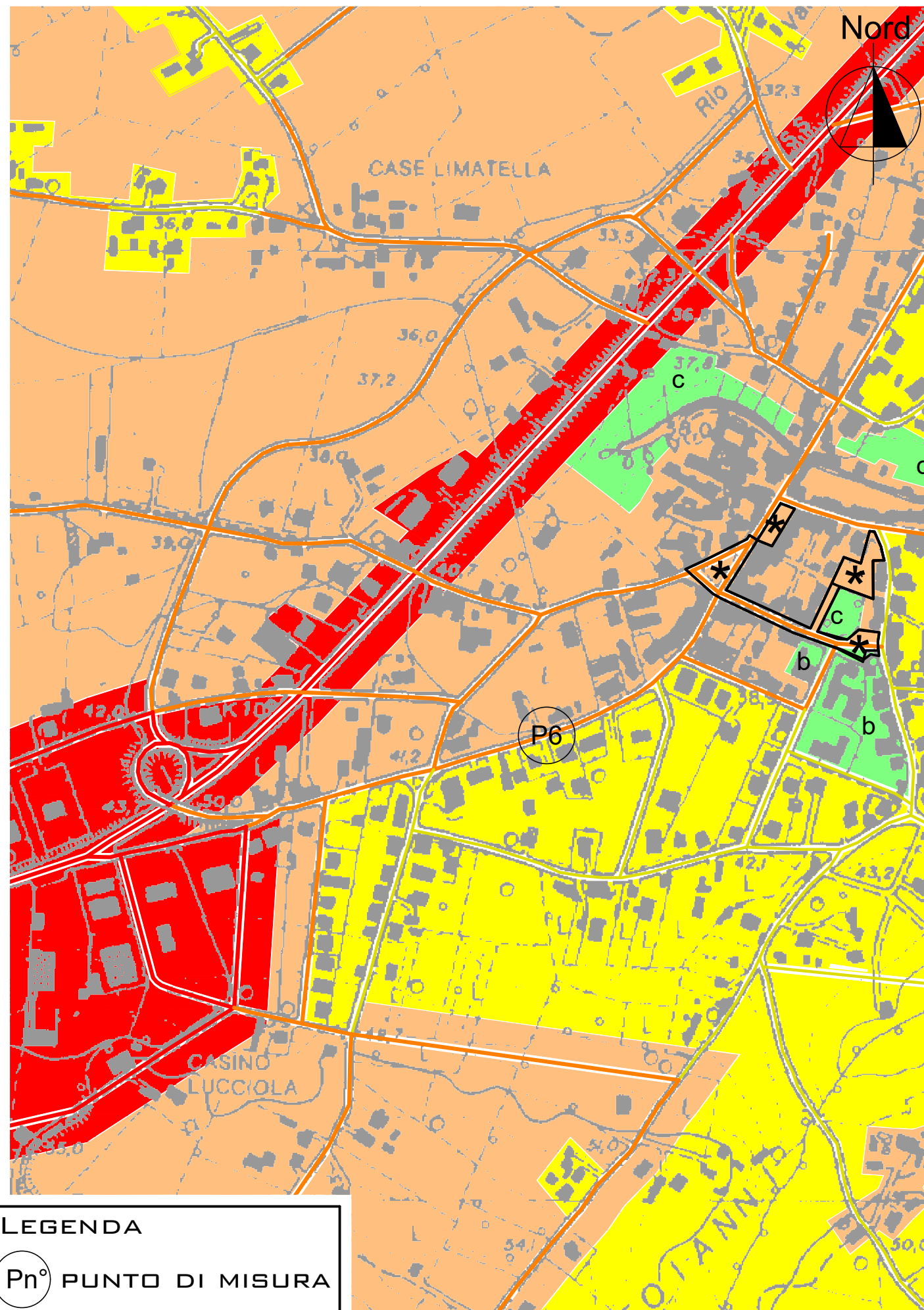
Leq 0.125s 63.0 dBA  
 SPL PEAK 102.2 dBA  
 SPL FAST 63.1 dBA  
**Leq 1m 71.3 dBA @ 1m**  
 SEL 89.1 dBA @ 1m  
 DOSE 8 hours 0.8 % A @ 1m  
 DOSE 0.0 % A @ 1m  
 SPL max FAST 89.4 dBA  
 SPL min FAST 34.0 dBA  
 Leq max 0.125s 111.2 dBA  
 Leq min 0.125s 34.1 dBA

END OF SECTION

\*\*\*\*\*

COMMENTO:

LIVELLO SONORO EQUIVALENTE AMBIENTALE  
 ESTERNO DIURNO - SALDATURA E BATTITURA  
 METALLI -



LEGENDA

Pn° PUNTO DI MISURA

RILIEVO FONOMETRICO PUNTO DI MISURA P6

MEMORY DUMP

\*\*\*\*\*

Section: P6 - Corso A. Spatuzzi civ. 151 (zona censuaria n° 2)

Program: 0 SINGLE DATA RECORD

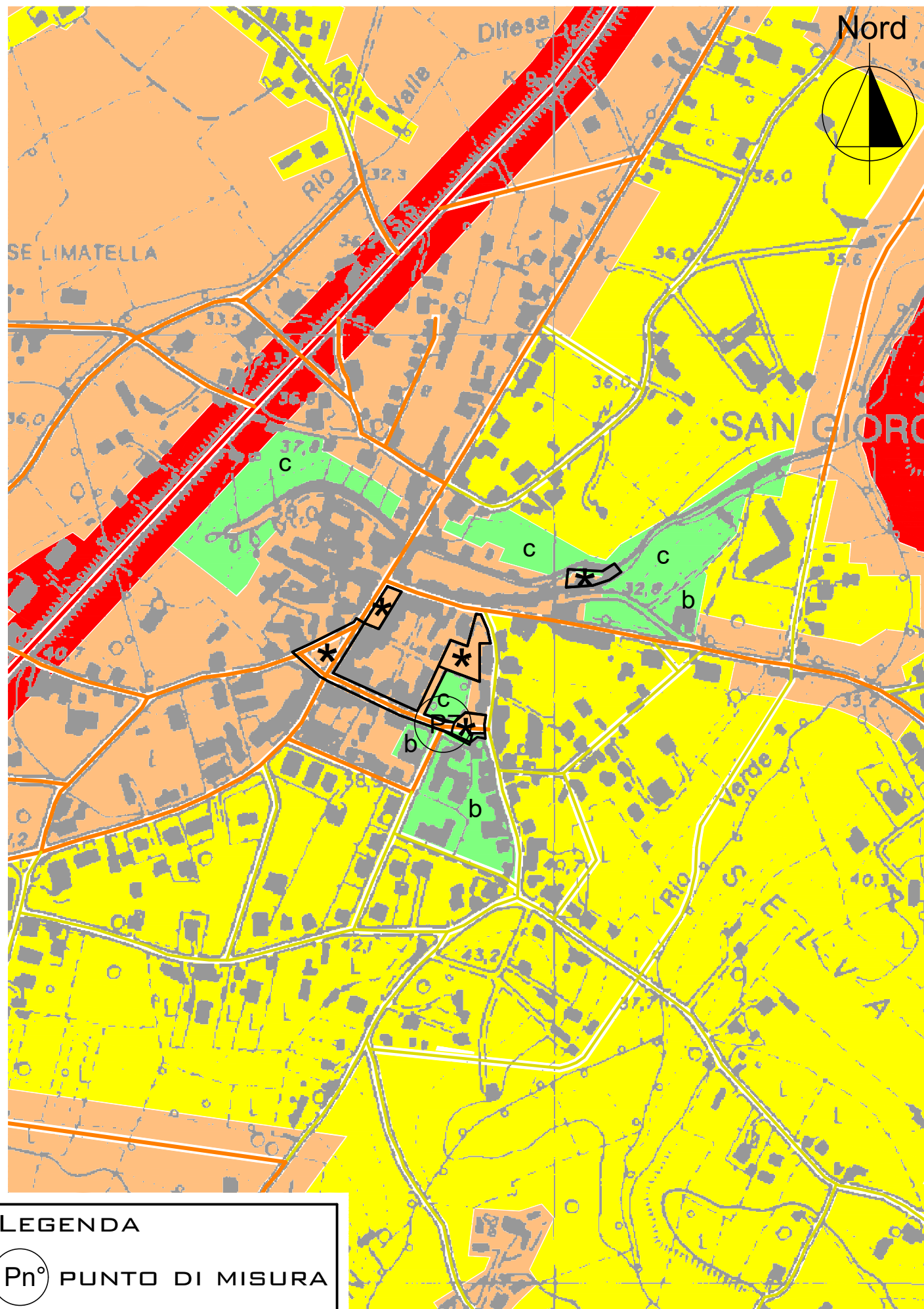
05 DEC 02 @ 15:10:24  
 MICROPHONE GAIN= 50mV/P AMP. GAIN=20dB  
 MEMORY UNIT=512KB

Leq 0.125s 59.9 dBA  
 SPL PEAK 72.0 dBA  
 SPL FAST 59.4 dBA  
**Leq 1m 58.5 dBA @ 00:00:07**  
 SEL 67.3 dBA @ 00:00:07  
 DOSE 8 hours 0.0 % A @ 00:00:07  
 DOSE 0.0 % A @ 00:00:07  
 SPL max FAST 60.1 dBA  
 SPL min FAST 34.5 dBA  
 Leq max 0.125s 111.1 dBA  
 Leq min 0.125s 34.6 dBA

END OF SECTION

\*\*\*\*\*

COMMENTO:  
 LIVELLO SONORO EQUIVALENTE AMBIENTALE  
 ESTERNO DIURNO - MACCHINA SEGHERIA  
 SENZA LAVORAZIONI



LEGENDA

Pn° PUNTO DI MISURA

RILIEVO FONOMETRICO PUNTO DI MISURA P7

MEMORY DUMP

\*\*\*\*\*

Section: P 7 - Piazza Dante (zona censuaria n° 2)

Program: 0 SINGLE DATA RECORD

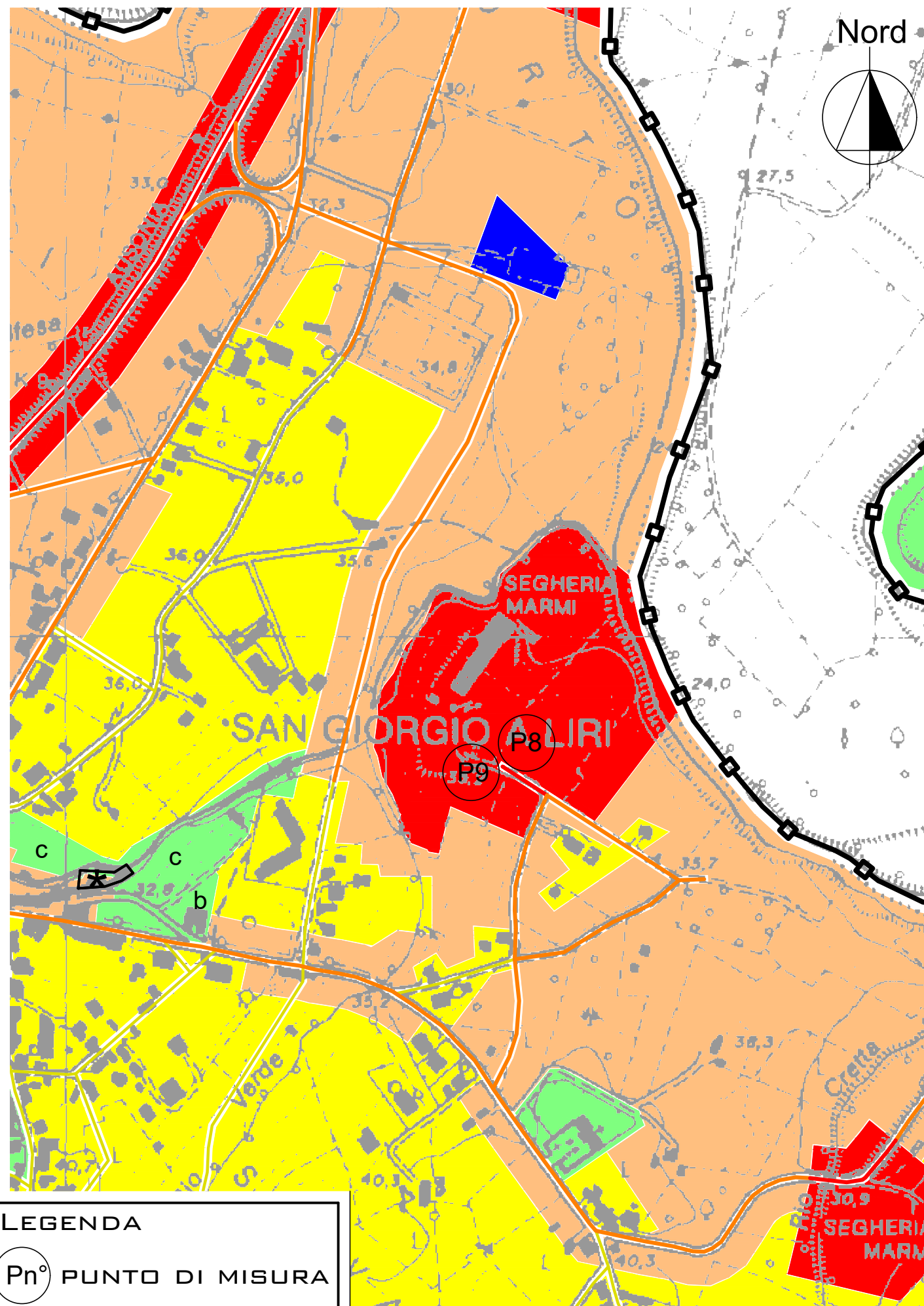
24 GEN 03 @ 14:46:30  
MICROPHONE GAIN= 50mV/P AMP. GAIN=20dB

MEMORY UNIT=512KB  
 Leq 0.125s 57.9 dBA  
 SPL PEAK 93.8 dBA  
 SPL FAST 58.1 dBA  
**Leq 5m 57.8 dBA @ 00:01:06**  
 SEL 76.0 dBA @ 00:01:06  
 DOSE 8 hours 0.0 % A @ 00:01:06  
 DOSE 0.0 % A @ 00:01:06  
 SPL max FAST 74.2 dBA  
 SPL min FAST 33.9 dBA  
 Leq max 0.125s 114.4 dBA  
 Leq min 0.125s 34.1 dBA

END OF SECTION

\*\*\*\*\*

COMMENTO:  
 LIVELLO SONORO EQUIVALENTE AMBIENTALE  
 ESTERNO DIURNO - TRAFFICO VEICOLARE  
 MODERATO -



# RILIEVO FONOMETRICO PUNTO DI MISURA P8-P9

MEMORY DUMP

\*\*\*\*\*

Section: **P 8 - Segheria marmi: lavorazioni generiche a porte aperte**  
 Program: 0 SINGLE DATA RECORD

24 GEN 03 @ 14:55:08  
 MEMORY UNIT=512KB

Leq 0.125s 65.9 dBA  
 SPL PEAK 82.1 dBA  
 SPL FAST 65.8 dBA  
**Leq 5m 65.5 dBA @ 00:01:07**  
 SEL 83.8 dBA @ 00:01:07  
 DOSE 8 hours 0.0 % A @ 00:01:07  
 DOSE 0.0 % A @ 00:01:07  
 SPL max FAST 70.9 dBA  
 SPL min FAST 34.5 dBA  
 Leq max 0.125s 114.3 dBA  
 Leq min 0.125s 34.5 dBA

END OF SECTION

\*\*\*\*\*

MEMORY DUMP

\*\*\*\*\*

Section: **P 9 - Segheria marmi: lavorazioni generiche a porte aperte**  
 Program: 0 SINGLE DATA RECORD

24 GEN 03 @ 14:56:24  
 MICROPHONE GAIN= 50mV/P AMP. GAIN=20dB  
 MEMORY UNIT=512KB

Leq 0.125s 67.0 dBA  
 SPL PEAK 82.7 dBA  
 SPL FAST 67.5 dBA  
**Leq 5m 65.9 dBA @ 00:00:14**  
 SEL 77.5 dBA @ 00:00:14  
 DOSE 8 hours 0.0 % A @ 00:00:14  
 DOSE 0.0 % A @ 00:00:14  
 SPL max FAST 74.3 dBA  
 SPL min FAST 34.5 dBA  
 Leq max 0.125s 114.3 dBA  
 Leq min 0.125s 34.5 dBA

END OF SECTION

\*\*\*\*\*

**COMMENTO:**  
 LIVELLO SONORO EQUIVALENTE AMBIENTALE  
 ESTERNO DIURNO - SMERIGLIATURA,  
 LEVIGATURA, GENERICHE LAVORAZIONI -